

# From Dependent to Independent Communities: Empowering communities using a Gender-sensitive, Asset-based Approach to Needs Assessment (GAANA)

American Evaluation Association  
Evaluation 2019, Minneapolis

Amy Elhadi, PhD Student  
Program Evaluation Specialist  
OSU Extension

Fally Masambuka, PhD  
Post Doctoral Research Assoc.  
University of Georgia

Debby Lewis, PhD  
Resource Planning Analyst  
OSU Extension



**THE OHIO STATE UNIVERSITY**  
COLLEGE OF FOOD, AGRICULTURAL,  
AND ENVIRONMENTAL SCIENCES

**CFAES**

OHIO STATE UNIVERSITY EXTENSION

## Agenda:

- Introduction to GAANA
- Comparing NA, and GAANA
- Discussion



**THE OHIO STATE UNIVERSITY**  
COLLEGE OF FOOD, AGRICULTURAL,  
AND ENVIRONMENTAL SCIENCES

[extension.osu.edu/LOD](http://extension.osu.edu/LOD)

**CFAES**

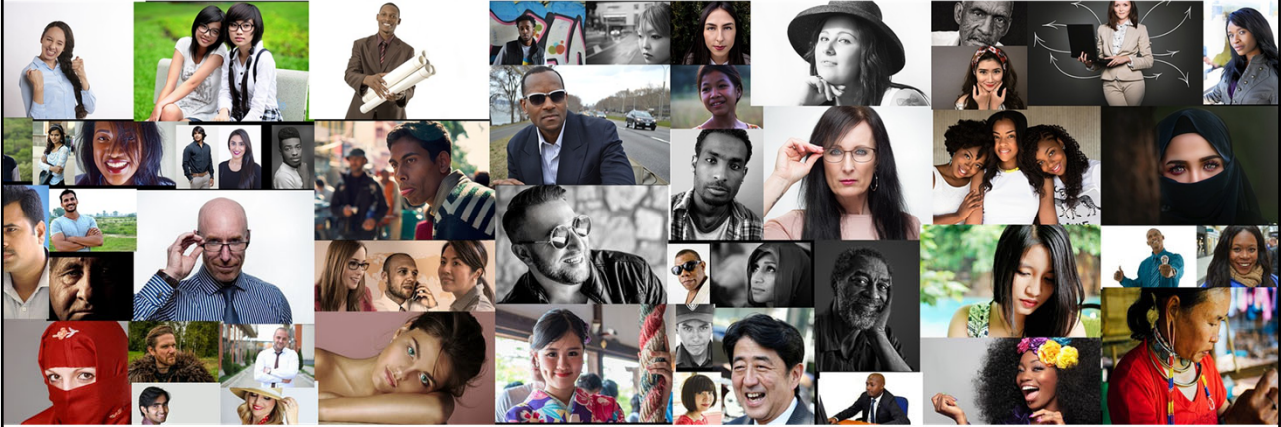
OHIO STATE UNIVERSITY EXTENSION

## **What is Needs Assessment?**



**CFAES**

OHIO STATE UNIVERSITY EXTENSION



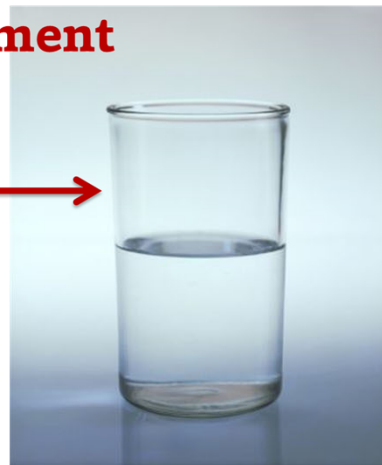
**THE OHIO STATE UNIVERSITY**  
 COLLEGE OF FOOD, AGRICULTURAL,  
 AND ENVIRONMENTAL SCIENCES

[extension.osu.edu/LOD](http://extension.osu.edu/LOD)
**CFAES**

OHIO STATE UNIVERSITY EXTENSION

## Traditional Needs Assessment

Half Empty: Problems, Needs, Issues



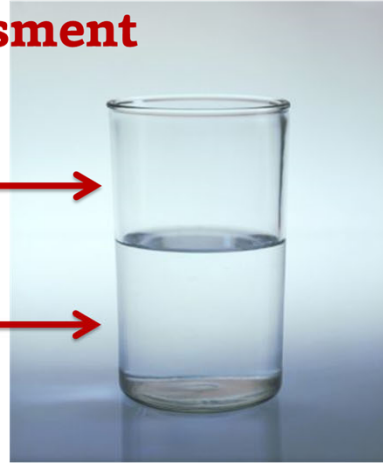
**THE OHIO STATE UNIVERSITY**  
 COLLEGE OF FOOD, AGRICULTURAL,  
 AND ENVIRONMENTAL SCIENCES

[extension.osu.edu/LOD](http://extension.osu.edu/LOD)

## Asset-Based Needs Assessment

Half Empty: Problems, Needs, Issues

Half Full: Assets, Gifts, Resources



THE OHIO STATE UNIVERSITY  
COLLEGE OF FOOD, AGRICULTURAL,  
AND ENVIRONMENTAL SCIENCES

[extension.osu.edu/LOD](http://extension.osu.edu/LOD)

## What is an Access Mechanism?



**CFAES**

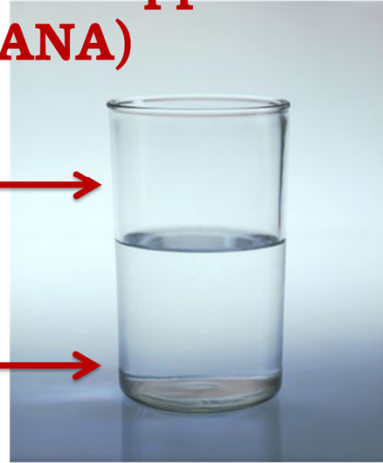
OHIO STATE UNIVERSITY EXTENSION

## Gender-sensitive Asset-based Approach to Needs Assessment (GAANA)

Half Empty: Problems, Needs, Issues

Access Mechanism to Groups:  
(Rights, Structural, Relational)

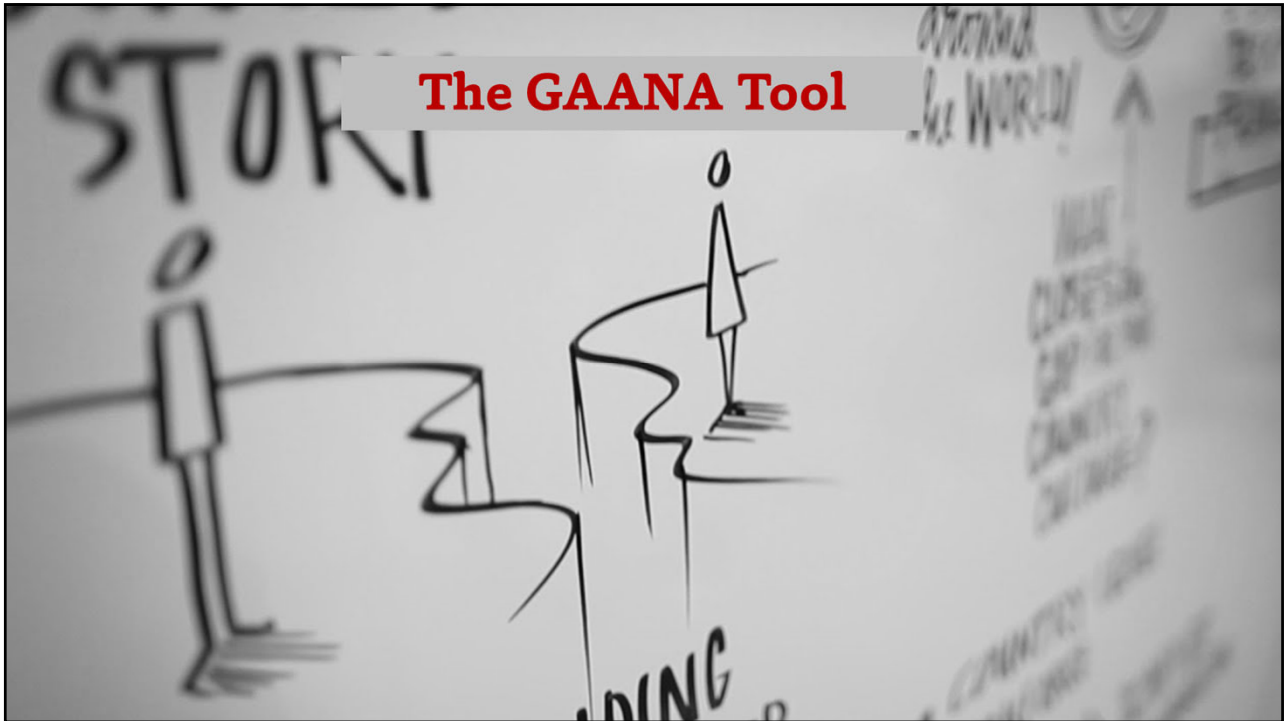
Half Full: Assets, Gifts, Resources



THE OHIO STATE UNIVERSITY  
COLLEGE OF FOOD, AGRICULTURAL,  
AND ENVIRONMENTAL SCIENCES

[extension.osu.edu/LOD](http://extension.osu.edu/LOD)

## The GAANA Tool



## Comparing GAANA to Traditional Needs Assessment



### GAANA

- Begins with assets and strengths
- Identifies accessibility and power relations
- Focuses on internal capacities

### Traditional NA

- Begins with discrepancies and gaps
- Focuses on external solutions
- Focuses in quantifiable solutions



**CFAES**

OHIO STATE UNIVERSITY EXTENSION

## Asset Worksheet 1

Assets/Strengths	Who uses / benefits	Who decides on the use / benefit	Who cannot use / benefit

[extension.osu.edu/LOD](http://extension.osu.edu/LOD)**CFAES**

OHIO STATE UNIVERSITY EXTENSION

## Asset Worksheet 2

Assets/Strengths	Cluster	Rights-based	Structural-based	Relational-based

[extension.osu.edu/LOD](http://extension.osu.edu/LOD)

**CFAES**

OHIO STATE UNIVERSITY EXTENSION

## Needs Worksheet 1

Issues/Concerns	Who is impacted	Who decides

[extension.osu.edu/LOD](http://extension.osu.edu/LOD)**CFAES**

OHIO STATE UNIVERSITY EXTENSION

## Needs Worksheet 2

Issues/Concerns	Cluster	Rights-based	Structural-based	Relational-based

[extension.osu.edu/LOD](http://extension.osu.edu/LOD)

**CFAES**

OHIO STATE UNIVERSITY EXTENSION



**THE OHIO STATE UNIVERSITY**  
COLLEGE OF FOOD, AGRICULTURAL,  
AND ENVIRONMENTAL SCIENCES

LEARNING AND ORGANIZATIONAL DEVELOPMENT  
[extension.osu.edu/LOD](http://extension.osu.edu/LOD)

**CFAES**

OHIO STATE UNIVERSITY EXTENSION

### **Amy Elhadi, PhD Student**

Program Evaluation Specialist, OSU Extension, LOD  
[elhadi.2@osu.edu](mailto:elhadi.2@osu.edu)

### **Fally Masambuka, PhD**

Post Doctoral Research Associate  
Agricultural Leadership and Communication, University of Georgia  
[fallys.masambuka@uga.edu](mailto:fallys.masambuka@uga.edu)

### **Debby Lewis, PhD**

Resource Planning Analyst, OSU Extension, LOD  
[lewis.205@osu.edu](mailto:lewis.205@osu.edu)

### **Resources:**

Access handouts and worksheets...  
[go.osu.edu/AEA2019gaana](http://go.osu.edu/AEA2019gaana)



**THE OHIO STATE UNIVERSITY**  
COLLEGE OF FOOD, AGRICULTURAL,  
AND ENVIRONMENTAL SCIENCES



**UNIVERSITY OF  
GEORGIA**

LEARNING AND ORGANIZATIONAL DEVELOPMENT  
[extension.osu.edu/LOD](http://extension.osu.edu/LOD)